

IMMUNOHISTOCHEMISTRY LAB SERVICES



SPECIFICATIONS

INDIVUMED conducts highly standardized, automated immunohistochemistry (IHC) to support pre-clinical and clinical R&D. More than one hundred IHC assays, covering important cancer-related and immune markers are established.

ASSAY DEVELOPMENT

- › Robust IHC assays ensuring high sensitivity and low background
- › Validation complies with standard clinical trials requirements (specificity, accuracy, linearity, precision)
- › Development process utilizes commercial or proprietary antibodies
- › Customer developed assays can be utilized by INDIVUMED

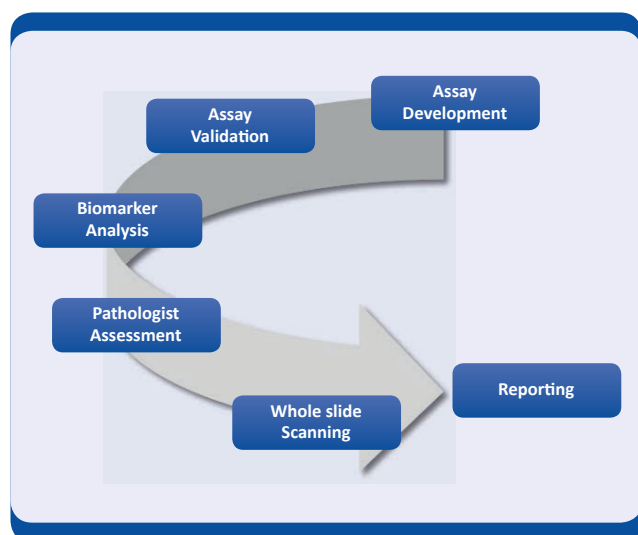
PREVALENCE STUDIES

- › Fully validated IHC assays and IVD reagents
- › Biomarker analysis under GCP/GCLP compliance
- › IHC slide reading by in-house pathologists
- › High-resolution whole slide scanning
- › Availability of high quality biospecimens from the INDIVUMED biobank
- › Partners for digital histopathology

ADDITIONAL TECHNOLOGIES

- › RNA in situ hybridization using RNAscope technology
- › DNA in situ hybridization using Ventana probes

PROJECT WORK FLOW



WORK FLOW OF ASSAY DEVELOPMENT

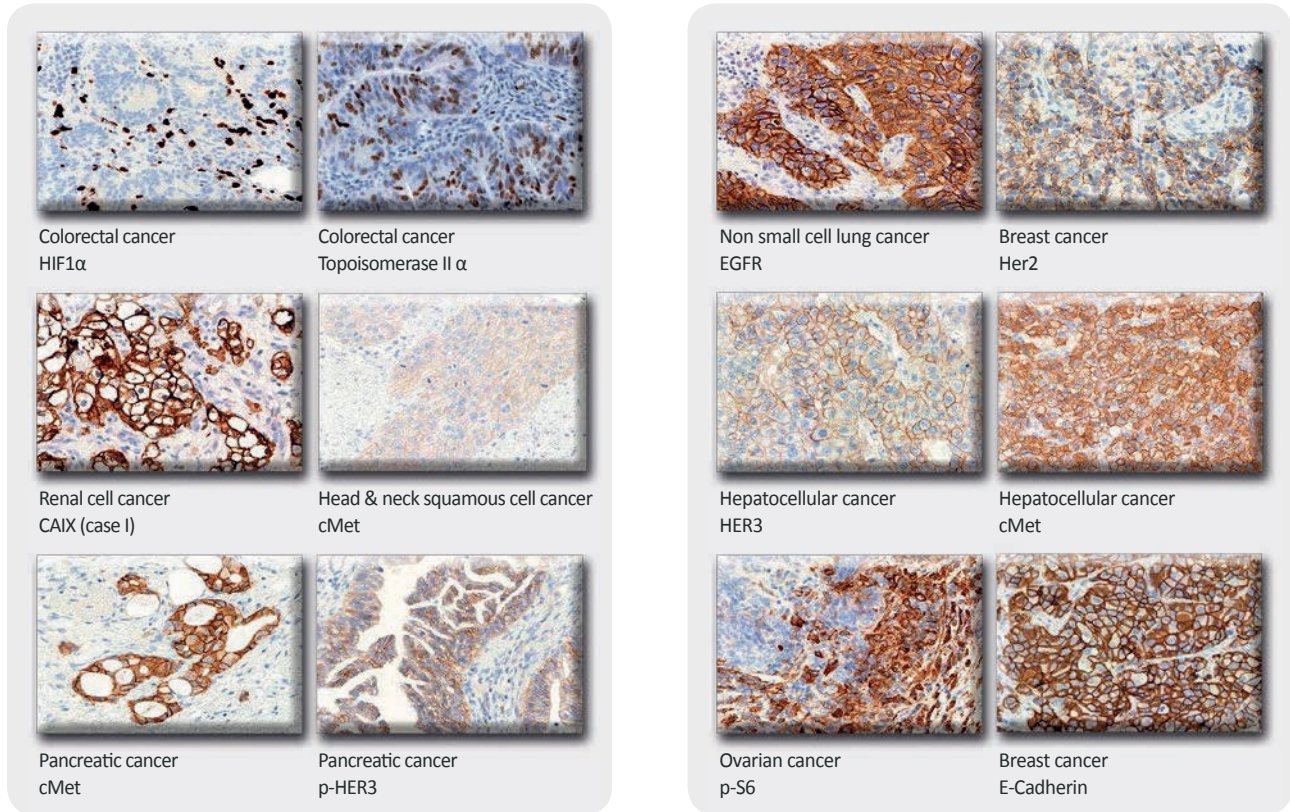
MILESTONE I
Specificity Testing and Pre-selection of Antibodies
Validation: Specificity

MILESTONE II
Immunohistochemistry Assay Development
Validation: Specificity and Accuracy

MILESTONE III
Full Assay Validation
Validation: Linearity, Sensitivity, Precision

IMMUNOHISTOCHEMISTRY LAB SERVICES

REPRESENTATIVE IHC STAINING RESULTS IN SOLID TUMORS



TISSUE MICRO ARRAYS (TMA)

Multiple tumor cases and matched normal tissue can easily be analyzed by immunohistochemistry on a single slide. INDIVUMED's tissue microarrays (TMA) are constructed from its high quality biobank. These TMAs are available through INDIVUMED's IHC Services Lab.

- › FFPE specimens of tumor and adjacent normal tissue
- › Single organ and multiple organ TMAs
- › Standardized collection and preparation of samples
- › Average cold ischemia time of tissues < 10 min
- › Core size: 1.0 or 1.5 mm
- › Number of cores per slide: up to 50
- › Comprehensive data available for all tumor spots on TMA

Contact Information:

USA Phone: +1-570-768-4053
Europe Phone: +49-40-41 33 83-18

CustServ@indivumed.com
www.indivumed.com

